



# Seedhead News

A Newsletter for Members of Native Seeds/SEARCH

Number 105

Winter 2010

2

From Our Board Chair  
Janos Harvest Dinner  
Breaks Record!

3

Our Future Home  
Capital Campaign Update

4

Program Accomplishments

6

Your Generosity Keeps  
Us Growing!

8

From Our Friends  
Volunteer Highlight

9

NS/S Staff Highlights  
On the Road with Alex

10

Mexico's Copper Canyon  
with Barney & Mahina

11

Contact NS/S Staff  
Donate Online  
News & Notes

12

We're Moving!  
Coming Up in 2010

## FLAVORS OF THE DESERT 2010

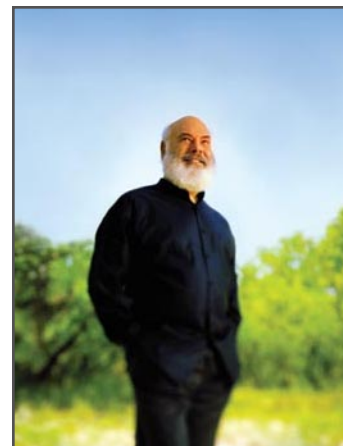
*Featuring a keynote address  
by Dr. Andrew Weil*

Andrew Weil received an A.B. degree in biology (botany) from Harvard in 1964 and a M.D. from Harvard Medical School in 1968. From 1971-84 he was on the research staff of the Harvard Botanical Museum and conducted investigations of medicinal and psychoactive plants.

At present Dr. Weil is Director of the Arizona Center for Integrative Medicine at the University of Arizona, where he also holds the Lovell-Jones Endowed Chair in Integrative Rheumatology and is Clinical Professor of Medicine and Professor of Public Health.

The author of many scientific and popular articles and of 11 books, his publications include: *Health and Healing*; *Natural Health*, *Natural Medicine*; and the international bestsellers, *Spontaneous Healing* and *Eight Weeks to Optimum Health*. His most recent book is *Why Our Health Matters: A Vision of Medicine that can Transform our Future*, published in September 2009.

Dr. Weil serves as the Director of Integrative Health and Healing at Miraval Life in Balance Resort in Catalina, Arizona. He is also the Chairman of the Council on Complementary and Alternative Medicine, Dubai Health Care City, UAE. A frequent lecturer and guest on talk shows, he lives near Tucson, Arizona. *For more information, please visit [www.drweil.com](http://www.drweil.com).*



**Save the Date:  
Sunday, March 7, 2010**

**6–8:30 pm at the historic Manning House  
450 W. Paseo Redondo in Tucson**

We're cooking up an extraordinary Flavors this year with a savory menu of heritage foods prepared to perfection at the historic Manning House in downtown Tucson and we want you to join us. This year, we're honored to have Dr. Andrew Weil, an internationally renowned expert of medicinal plants, alternative medicine, and medical education reform, as our keynote speaker.

Your generous support of Flavors in past years has allowed us to preserve and protect genetic diversity and the cultural heritage represented in the more than 1,800 varieties of agricultural seed we steward. Proceeds from the dinner enable us to support farmers and gardeners in our community and throughout the Southwest who work tirelessly to preserve small-scale, local, and healthy agriculture.

Register now to guarantee your place at Flavors of the Desert 2010. Tickets are \$125 per person of which \$76 is tax deductible. Visit [www.nativeseeds.org](http://www.nativeseeds.org) to RSVP online.

**We envision the Greater Southwest as  
a place where farms and gardens,  
kitchens and tables, stores and restaurants  
are brimming with the full diversity of  
aridlands-adapted heirloom crops;  
people are keeping the unique seeds and  
agricultural heritage alive; and the crops,  
in turn, are nourishing humankind.**

— VISION STATEMENT

# From our Board Chair

## *Growing Forward Together*



Fellow Members,

Bryn invited me to reflect on our organization from where I sit—as Chair of the Board of Directors. How *do* I feel about Native Seeds/SEARCH? These are the words that come to mind.

**Proud.** I joined Native Seeds/SEARCH in 1983 when it was an infant dream of the visionary founders and a tiny collection of seeds stored in an old refrigerator. Attending the groundbreaking in November for our new Conservation Center, I realized that so many members

and partners enthusiastically share this dream twenty-six years later. I am very proud to be part of this stewardship journey with you.

**Amazed.** Serving on the Board allows me to truly appreciate how *you*, our volunteers and members, make amazing things happen. Without fail, whenever resources are tight, someone always steps up to help, even during this challenging economy. Through board governance, I also have the privilege of experiencing the brilliance of our staff team that continually creates magic on a daily basis through their dedication, creativity, and professionalism. We are profoundly blessed.

**Relevant.** Our mission becomes more germane each passing day. Our *ex-situ* and *in-situ* conservation work resonates with a diverse audience that shares interest in preservation of agricultural traditions, production of good food, and generates hope for future generations. Now, more than ever, an evolved Native Seeds/SEARCH has much to offer to the quality-of-life equation of our time and for many years to come.

**Optimistic.** I am convinced that our organization has the support and resilience necessary to continue to grow and adapt, while remaining true to our collective vision. I wish to thank all of you for being an integral ingredient in the process. I look forward to another fruitful year together.

¡Adelante!



Susan Kunz

### JANOS HARVEST DINNER BREAKS RECORD!

*Thanks to Janos Wilder, board member and chef extraordinaire, for the best ever Harvest Dinner on October 27! An inspirational evening of "food from the past, prepared for the future" delighted more than 90 NS/S friends at Janos Restaurant on the grounds of the Westin La Paloma Resort in Tucson. Janos prepared a remarkable four-course dinner with delectable wine pairings. Thanks to all in the NS/S community for bringing your great support and enthusiasm!*

The mission of Native Seeds/SEARCH (Southwestern Endangered Aridland Resources Clearing House) is to conserve, distribute, and document the adapted and diverse varieties of agricultural seeds, their wild relatives and the role these seeds play in cultures of the American Southwest and northwest Mexico.



#### FOUNDERS

Barney Burns  
Mahina Drees  
Gary Nabhan  
Karen Reichhardt

#### BOARD OF DIRECTORS

##### *Chair*

Susan Kunz

##### *Vice Chair*

David Tiers

##### *Secretary*

Pat Reid

##### *Treasurer*

Jacob Bernal

*Lydia Breunig*

*Barney Burns*

*Mahina Drees*

*Sage Goodwin*

*Danielle Ignace*

*Donald Luria*

*Michael McDonald*

*Bob Sanderson*

*Ronald Austin Wells*

*Janos Wilder*

*Ofelia Zepeda*



#### Seedhead News

(ISSN 1083-8074)

is published three times a year — Fall, Winter & Spring/Summer — by Native Seeds/SEARCH as a benefit to members.

All photos by NS/S staff and volunteers, unless otherwise noted. Contents © 2010.

Design: Julie St. John



**From groundbreaking to construction: it's happening!**



## Our Future Home:

# NS/S Conservation Center at Brandi Fenton Memorial Park IN THE BINGHAMPTON NATIONAL HISTORIC LANDSCAPE

On November 7, board members, government representatives, and NS/S co-founders turned over shovels of dirt to mark a festive groundbreaking celebration for our new agricultural Conservation Center in the Binghampton National Historic Landscape. The day signified the beginning of construction on a cooperative project between Pima County and Native Seeds/SEARCH. Approximately one hundred volunteers, staff, friends, and members toured the site where our new 5,700-square-foot facility will be built.

Located at Tucson's Brandi Fenton Memorial Park, this site is listed on the National Register of Historic Landscapes as an historical agricultural area. Our new center will house a 600 + square-foot walk-in temperature and humidity controlled cold room and a 150-square-foot walk-in temperature and humidity controlled freezer. State-of-the-art equipment and more usable space will greatly

enhance our ability to both manage the collection and make more of it available to a wider public. By entering into a collaborative partnership with Pima County, we benefit from their plans to develop demonstration gardens and heirloom orchards, community classroom space, and a commercial kitchen, increasing our visibility and opportunities to educate the community about the region's rich agricultural legacy, traditions, and resources.

Thanks to generous gifts from our partners, members, and supporters (listed below) we're well on our way to our permanent education and conservation center. If you have not yet had the opportunity to support this innovative project and would like to, please visit our website at [www.nativeseeds.org](http://www.nativeseeds.org) or contact **Julie Evans** at 520.622.0830 or [jevans@nativeseeds.org](mailto:jevans@nativeseeds.org).



## Update on Our Capital Campaign

### \$50,000 and above

Anonymous (1)  
Peter Q. Lawson  
Giles W. & Elise G. Mead Foundation  
Nina Mason Pulliam Charitable Trust  
Tohono O'odham Nation  
Tucson Electric Power (in-kind)

### \$25,000 and above

Anonymous (2)  
Amy P. Goldman  
Gila River Development Authority  
Dr. William & Ann Horst  
Darline Martin/Edward K. Martin Family Trust  
Quitobaquito Fund

### \$10,000 — \$24,999

Anonymous (2)  
Colleen Crombie  
DeGrazia Foundation  
Nancy Evans  
Vernon & Diane Kliever  
Cesar Mazier  
Charles McKittrick, Jr.  
John & Jan Rickert-Mueller

F. Peter Rose  
Sherman Scurry, M.D. & Chris O'Neill, M.D.  
Sheraton Wild Horse Pass  
Southwestern Foundation for Educational and Historical Preservation  
Technicians for Sustainability (in-kind)  
Richard Fe & Nancy Tom  
Laurel Wilkening & Godfrey Sill

### \$5,000 — \$9,999

Anonymous (1)  
Kerstin & Spencer Block  
Barney Burns & Mahina Drees  
Mary Ann Clark  
James & Faria V. Dretler  
Robert Garner & Robin Beresford  
Gary & Mary Irish  
Robert Martin & Luci Tapahonso  
Marcy Olajos  
Roland Pesch & Kathleen Russkoppf  
Wendy & Bill Ring  
Bill & Alice Roe  
Ronald & Karen Wells  
Janos & Rebecca Wilder

### \$1,000—\$4,999

Anonymous (2)  
Billie Jane Baguley  
James Benedict  
Jacob Bernal  
Aleta & Daniel Bloch  
Georgiana & John Boyer  
Anne & Arthur Britt  
Jane Brown  
Jenny & Leo Carrillo  
Margaret Gay Chanler  
Kevin Dahl & Barbara Miller  
Andrew Dalton  
William Doolittle  
Mary Peace Douglas  
Julie Evans & Susan McMahon  
Elizabeth Frautschi  
Rayna Green  
Edward HacsKaylo  
Diana Hadley & Peter Marshall  
Todd & Suzie Horst  
Bryn Jones & Ken Hedrick  
Gurumeet & Nirvair Khalsa  
Nance Klehm  
Donald & Edith Kunz  
Susan Kunz & t. kay Estes  
Alice McKittrick

Linda McKittrick & Charles DeConcini  
Gary Nabhan  
Suzanne Nelson & Rob Robichaux  
Barbara Roastingear & Henry Oliver III Family Foundation  
Pitt Family Foundation  
Charles & Suzanne Peters  
Ken Porter  
Pat & Mimi Reid  
Roger Riggs  
David Tiers & Sue Ann Breems  
Cheryl Toth  
Robert Traub  
Lindsay Werth  
Susan & David Wirshup  
Constance & Jeffrey Woodman  
Ofelia Zepeda

### \$500 — \$999

John & Christine Augustine  
Patricia Bender  
Susan Buffer  
Dora & Barry Bursey  
Crecencio Elenes  
Kate & LeRoy Ellison

*continued next page*

# Program Accomplishments: October 1, 2008 – September 30, 2009

For more detailed Program Accomplishments, please visit our website [www.nativeseeds.org](http://www.nativeseeds.org)

Because of your generous contributions, Native Seeds/SEARCH celebrated many successes in 2009. The past year evidenced the great local, regional, national, and global needs that Native Seeds/SEARCH fulfills. People were motivated to grow their own food in their backyards as a result, in part, of a struggling economy. New gardeners and experienced farmers alike secured high-quality seeds from NS/S that are adapted to the challenging growing conditions of the Southwest. This growing movement was not limited to people in the Southwest; people from Asia and Africa also sought crops that will prosper in changing climates and turned to NS/S for the precious resources we conserve. In difficult times, we're proud our mission positively impacts people's lives around the world. Thank you for your continued commitment to preserving and protecting the unique genetic diversity and cultural heritage represented in the more than 1,800 varieties of agricultural seed we steward. Here's just a sampling of what we accomplished in our last fiscal year.

## Conservation

☛ Conservation staff creatively spaced "garden plots" across the farm at distances that minimized the possibility of crossing. This strategy allowed us to grow a mix of corn, squash, melon, beans, cowpea, gourd, and tobacco to add approximately forty-eight accessions to the year's grow-out. Our summer grow-out totaled 111 varieties, including all six tomato varieties, which will be available in our 2010 *Seedlisting*.

☛ A cowpea and a sunflower that had never regenerated, despite multiple efforts in previous years, both produced seed in 2009.

☛ Community members fenced in eighteen additional garden and orchard plots and grew out nine native maize varieties in the Tarahumara communities of the Sierra Madres.

☛ Conservation staff conducted GMO tests of eighteen varieties of maize, at the request of the Tarahumara communities, and found no evidence of any GMOs.

☛ NS/S hired a curator to provide leadership for the organization regarding cataloging, documentation, and research of our entire collection. One of his most exciting accomplishments to date is the production of Google Earth maps showing the origination of NS/S collections.

## Native American Outreach

☛ Our Native American Committee convened an Advisory Panel to assist staff in assessing our work with Native communities.

☛ Staff represented NS/S at the newly formed Gila River Farmers' Market at Wild Horse Pass on the Gila River Reservation.

☛ NS/S attended a Hiaki Medicine information session at Pascua Yaqui that included a talk on "Traditional Food and Healing Plants and Herbs in the Sonoran Desert" by Angela Martinez.

☛ Members of the Natwani Coalition, a group of Jemez elders, Walatowa Elderly Program staff, a group from Traditional Native American Farmers Association (TNAFA), and Guatemalan farmers from Qachuu Aloom toured the Seed Bank.

## Update on Our Capital Campaign *continued*

George & Linda Griffin  
Sanjeev Pandey  
Barbara Radwan-Kuzelewski & Joseph Durnell  
Karen Reichhardt & Jim Heard  
Stephen Shetron  
Jessica Smith  
John Peter Wilhite

### \$250—\$499

Briggs & Pat Ackert  
Betsy Armstrong  
Kathy Altman & Ivy Schwartz  
Mary Barsony  
Joyce Boyle  
Lydia Breuning & Brian Stark  
Ronilee Clark & Brian Arnold  
Wayne & Bernice Clouser  
Janet Darby  
Albert & Kimber Delorenzo  
Ruth Eckert  
Jane Evans & Gene Joseph  
Donald & Mima Falk  
Damian Fleming

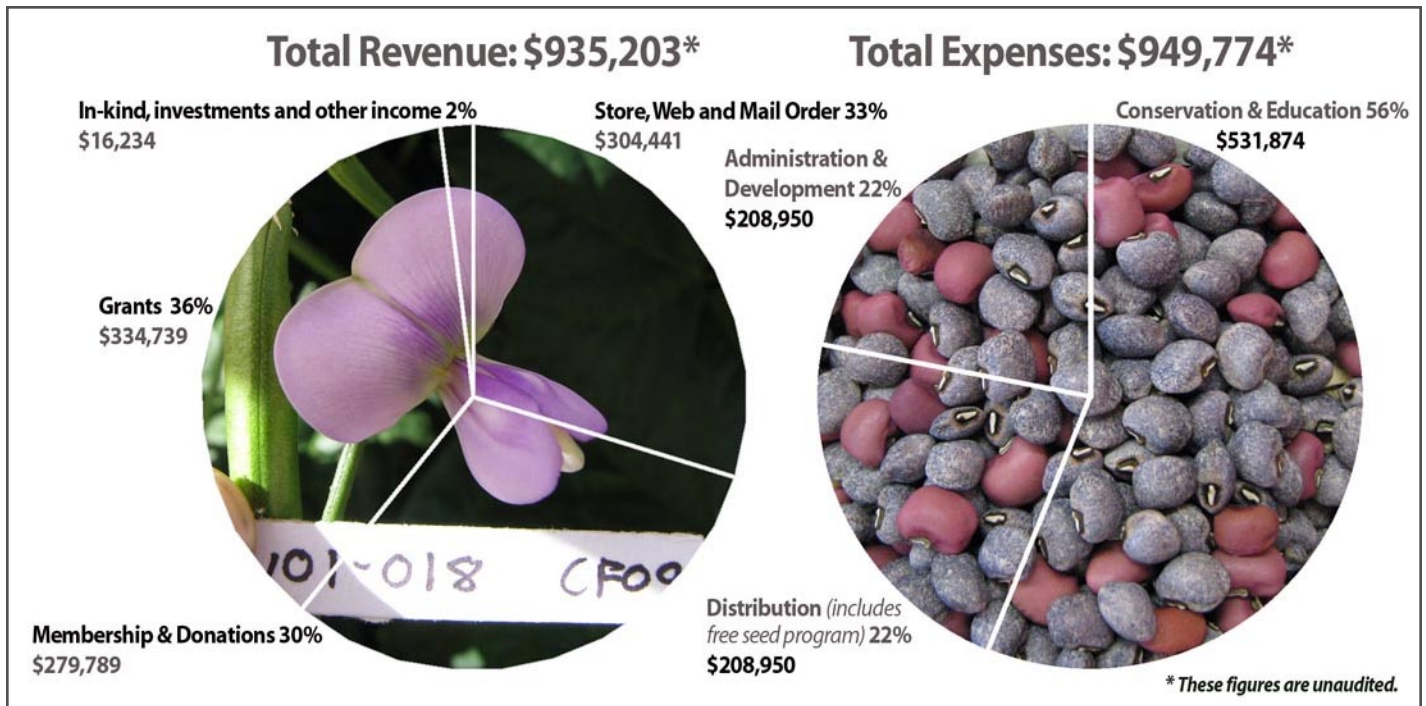
Connie & Bob Foster  
Joan Hood & David Davis  
Daniel Gordon  
Beth & Frank Guldseth  
Peter Hubbell  
Christina Husted  
Nancy Jackson & Mustafa Alahwel  
Julie & Richard Kornmeyer  
Bill & Beth Krumbein  
Orme & Elizabeth Lewis Jr.  
Roy Lowenstein  
Chris Lowen  
Marty & Audrey Lowen  
Peter McCrohan  
Johann & Chris McKee  
Sandra Nemeth  
Sandy Paris & Lou Bright  
Richard Pratt & Lois Grant  
Laurinda Queen  
Bea & German Quiroga  
Evelyn Rens  
Ariel Swartley  
Marie Tymrak  
Damian Fleming

John & Mary Lou Winder  
John Wood & Shirley Powell  
Sherrie Zeitlin & Ron Landon

### \$100—\$249

Albert & Alan Adler  
Gary Bachman & Joanne Basta  
Susan Breckenridge  
Richard & Debbie Crawford  
Nancy Curriden  
Lyle & Vera Dethlefsen  
Pete Duarte  
Betty Eldon  
Jane Elins  
Linda Finke  
Dody Fugate  
Cassandra Gaines  
Tom & Sara Gibbs  
Linda, Wally, & Aaron Goodwillie  
Kathy Graaff  
Jeff & Jody Kosanke  
Delight & Timothy Lane  
Susanne Lane & Yahya Sadowski  
Mary Kay LeFevour & Laura Markowitz

Susan Lobo  
Elizabeth Vance Mattfield  
Sharon & James McKenzie  
John & Barbara McLean  
William Miller  
Miriam Moore  
Jonathan Myers  
P.S. Osborne  
Margaret Pope & Norman Epstein  
Linda Restifo  
Theresa & Michael Rigney  
Alex & Marilyn Sando  
Inga Simmonds  
Robert & Helga Small  
Southern Horticuture  
K. Martin Stevenson  
Cary & Nicolette Stubbs  
Bob & Joan Tweit  
Carol Townsend & Charles Cole  
Edna & Dave Weigel  
Gabe Vega  
Gwinn & Pat Vivian  
Glenda Zahner



**FY 2009 told through photos of a cowpea variety (flower and peas) which was regenerated at the Conservation Farm for the first time!**

**Distribution**

☛ Seed sales *increased twenty-seven percent* over last year and *forty-two percent* from two years earlier.

☛ Various farmers' markets, grocery stores, restaurants, and retail outlets in Patagonia, Sonoita, Tucson, and beyond purchased produce from our Conservation Farm such as P'itoni onions, tomatoes, basil, and wheat berries.

**Outreach and Education**

☛ Conservation staff conducted a two-day workshop, *Growing Your Own Seed 'Library' (Bank): Seed Production, Storage and Conservation*, at the NS/S Seed Bank and Conservation Farm for participants from Hopi, Gila River, and New Mexico who were brought together by TNAFA.

☛ Three Heirloom Fruit/Orchard Restoration Workshops were held in Traverse City, Michigan; Madison, Wisconsin; and Chicago, Illinois.

☛ NS/S hosted the annual San Juan's Day at the Conservation Farm which included a blessing of the fields, a performance of traditional Aztec harvest songs and dances, farm tours, work groups, and the famous heritage foods potluck for approximately seventy community members.

☛ The Santa Cruz Valley Heritage Alliance and the Mountain Empire Trail Association collaborated with us for the annual Harvest Celebration at the Conservation Farm. Guests stomped beans, learned how to save seeds, watched planting demonstrations, toured the farm, listened to live bluegrass music, and enjoyed a guided walk along a portion of the new Patagonia Train Track Trail created through a partnership between the town of Patagonia, the Nature Conservancy, and NS/S.

☛ Pat Kenny, former instructor for the USDA Graduate School Summer Session and past coordinator of the National Library of

Medicine Herb Garden in Maryland, presented a week-long workshop, *The World of Herbs*, as a benefit for NS/S.

**Membership**

☛ In 2009, more than two hundred individuals became new members of NS/S. A plan is underway to increase our membership program and involve our supporters in different ways to help us succeed in our mission.

**Volunteers**

☛ During the fiscal year, more than 140 volunteers contributed 4507 hours of time to Native Seeds/SEARCH, the equivalent of approximately two full-time staff.

☛ On average, sixty volunteers helped at our Seed Bank, retail store, administrative office, and Conservation Farm each month.

☛ In August, we conducted our first Ambassador Training session to create a corps of volunteer leaders who will represent NS/S at outreach and community events.



**Another 2009 grow-out from the Conservation Farm.**

# Your Generosity Keeps Us Growing!

MANY THANKS TO ALL OUR MEMBERS & FRIENDS FOR SOWING & GROWING THE SEEDS OF SUPPORT

All donations and membership listed were received between October 1, 2008, and September 30, 2009. Thousands of supporters made gifts under \$100. We wish we had the space to acknowledge each and every one of you and deeply appreciate your contributions.

## \$25,000 and more

CS Fund/Walsh-Mott Legacy  
Lillian Goldman Charitable  
Trust  
The Christensen Fund  
Wallace Genetic Foundation  
Wallace Research Foundation

## \$10,000-\$24,999

Alice H. Brown Trust  
Steve Leuthold Family  
Foundation  
Slow Food USA/Ceres  
Foundation

## \$5,000-\$9,999

Anonymous (2)  
George Binney  
Tom & Cande Grogan  
Alice McKittrick  
Roland Pesch & Kathy Roskopf  
Dr. Scholl Foundation  
The Walton Family Foundation,  
Inc.  
Met Foundation

## \$1,000-\$4,999

Anonymous (2)  
Eric Biderman  
Dora & Barry Bursey  
Mary Ann Clark  
Patricia Dewitt  
Dr. Frances Dickman  
William Doolittle  
Mary Peace Douglas  
Mahina Drees & Barney Burns  
Environmental Fund of Arizona  
Nancy Evans  
Rayna Green  
John & Terri Groth  
Edward Hackskaylo  
Greg Hook  
Dr. William & Ann Horst  
Gary & Mary Irish  
Ohio State University  
Wendy & Bill Ring  
Bill & Alice Roe  
Jim & Alice Roth  
Linda Serna  
Slow Food Tucson  
Laurel Wilkening

## \$500-\$999

Anonymous (4)  
John & Christine Augustine  
Billie Jane Baguley  
Patricia Bender  
James Benedict  
Peter Bretting & Kim Lewers  
Casino del Sol  
Kitty Collins

Colleen Crombie  
Susan Curtis  
Kevin Dahl & Barbara Miller  
Anthony & Laurie Dean  
Desert Garden Club  
Ralph & Mary Dwan  
Julie Evans & Sue McMahon  
Flowering Tree Permaculture  
Elizabeth Frautschi  
Elizabeth Jo Higgins  
Gus & Sue Hiller  
George Jacques  
Frederick & Gayle Jandrey  
Bob & Katy Jones  
Deborah Knight  
Beth Malasky & John Chesley  
David Maren & Nita Garland  
Michael & DeAnna McDonald  
Susan Murchie  
Barbara Roastingear & Henry  
Oliver III Family Foundation  
Bill & Carol Owens  
Jane Ragle & John Smith M.D.  
William J. & Priscilla Robinson  
Philanthropic Fund  
Pat & Jennifer Roche  
Henry Roe  
Joaquin & Bernadette Ruiz  
Heidi Schlitt  
Sear Family Foundation  
Laine Seaton  
Conrad Shumaker  
Jim & Debbie Spaide  
Vasilios Family  
Elaine West & Kevin Sharp  
Williams & Associates  
Marilyn & William Young  
Charitable Foundation  
David Zamarin & Valerie Diaz

## \$250-\$499

Anonymous (2)  
Kathy Altman & Ivy Schwartz  
Kathleen Anderock  
Cyndi Andrews  
Betsy Armstrong  
Joan Atkinson  
Deborah & Dorian Bezanis  
Barbara & William Bickel  
Peter Bigot  
Aleta & Daniel Bloch  
Georgiana & John Boyer  
Lindy & Steve Brigham  
Arch & Laura Brown  
Ethalinda Cannon  
Duane & Arleta Carr  
Charles Corfield  
Steve & Faye Cover  
Barba Crista & Robert Goldman  
Susan & Nicole Curtis

Nina Dambra  
Lyle & Vera Dethlefsen  
Joan Donnelly  
Michael Elsner & Peggy  
Hutchison  
Bette & Gerard Ervin  
Elizabeth Evans & Stephen  
Reitz  
Larry Evers & Barbara Grygutis  
Audrey & John Finley  
P. Douglas Folk & Cynthia Lasko  
Food Conspiracy Co-op  
Gary Goertz  
Daniel Gordon  
Cal & Kerith Graeber  
Chuck & Mary Graf  
Jim & Loma Griffith  
Stan Heymann & Lily Bhavani  
Aquarian  
Todd & Suzie Horst  
Marsha & David Irwin  
Susan & Albert Johnson  
Rob Johnston, Jr.  
Bryn Jones & Ken Hedrick  
Joshua Jones  
Adrienne Joseph  
Mikio Kimata  
Susan Kunz & t. kay Estes  
Roy Loewenstein  
Marty & Audrey Lowen  
Christina & Douglas McVie  
Barbara & Floyd Miller  
Paul Minnis  
John Mitchel  
Karen Moriah  
Julie Morton  
Elizabeth Naylor  
Robert Peters  
Charles & Pat Pettis  
Michael & Linda Powers  
R. Cynthia Pruett  
Janet & Ted Ranney  
Darren Rhodes  
Andy Robinson & Jan  
Waterman  
F. Peter Rose  
Jim & Dee Ann Sakrison  
Travis & Leigh Sebera  
Curtis Scribner  
Stephen Shetron  
Terry Shreve  
Bob Skaggs & Kathleen  
Anderock  
Jed Staley  
Vera Studer  
Annette Sutura  
Carol Thompson  
David Tiers & Sue Breems  
Truckee Tahoe Community  
Foundation

John Wahl & Mary Lou Forier  
Anne Watson  
Edna & Dave Weigel  
Lindsay Werth  
Whole Foods Market  
Janos & Rebecca Wilder  
Alison & Weston Wilson  
Margaret & Michael Woodhouse

## \$100-\$249

Anonymous (3)  
Briggs & Pat Ackert  
Lyle Ackman  
Lori Adkison  
David Allen & Mark Sammons  
William Allen  
Scott & Jerri Altendorf  
Virginia Ames  
Megan Anderson  
James Aufderhaar  
Bank of America Matching Gifts  
Jehanna Balzer & Thomas Good  
Maria Bartelt  
Gayle Basso  
Deron Beal & Jennifer Columbus  
Dinah Bear & Roger McManus  
Eric & Christine Behling  
James Belin  
Debra & Norman Bell  
C. Diane Bell  
Carol Bell  
Barbara & George Birmingham  
Jonathan Black  
Frank Boccio  
Elaine Bolding  
Charles Bouril  
Elizabeth Boyd & Andy Roth  
Joyce Boyle  
Susan Breckenridge  
Anne & Arthur Britt  
Dan & Cindy Brocious  
Jeanne & Robert Broome  
Gregory Brown  
Julia Brown & DeWitt Daggett III  
Alan Brubaker  
Karen Bruhns & Tom Weller  
Susan Buffler  
Helen & Dick Bulinski  
Chandler Bullion  
Martha Burgess  
Jeff Bursey  
Laurie & Bill Buss  
Logan Campbell  
Duane & Arleta Carr  
Lynn Chapman  
Alice Chesley  
Henry Christensen  
Marshall Chrostowski  
Algernon & Ann Churchill  
Krista Clark

Dean Cleverdon & Nancy  
Nyberg  
Wayne & Bernice Clouser  
Barbara Cobb  
Susan Codega & George  
Howard  
Ric & Sue Conway  
Robin Coon  
Randy Coons  
Will Creach  
Amy & David Crown  
Ann Czaja  
Judy Dain  
Vanessa & Robert Dearing  
Douglas Deever  
Raul Delgado  
Jonae Delong  
Phil Derkum  
Denise Dever  
Dave DeWitt  
Marcia Donaldson & Bill  
Gillespie  
Dody Dorn & Kevin Hughes  
Cliff Douglas  
Elaine Drees & Casey Finstad  
Pete Duarte  
Kathleen Duncan & Bill Kern  
Barbara, Glenn, Ryan & Taylor  
Dunn  
Richard Eaton  
Jeanne Eddy & Lee Renz  
Drs. David & Joan Ehrenfeld  
Claire Eigenbrod  
Betty Eldon  
Heriberto Escamilla  
Dianne Evans  
Jane Evans & Gene Joseph  
David & Carol Farmer  
Barbara & Terry Fenzl  
Regis Ferriere  
Donald Ferry  
Mary-Jean Fickes  
Linda Filippi  
Marie-Elizabeth Finamore  
Stacy Fischer  
Judy Flanagan  
Lynn Flance  
Stephen Fletcher  
Anthony Florez  
Bunny Fontana  
Linda Foster  
Catherine & Mark W. Frankel  
Dr. Harold & Miriam Fritts  
Greta Fruhling Frazier  
Timothy Fuller & Robin Hiller  
Glenn Furnier & Aida Castillo-  
Flores  
Chris Gans  
April Gavin  
Paul Gepts

Sharon Gilbert  
 Ben Gipson  
 Chris Gleeson  
 Michal Glines & Michael Racy  
 Linda, Wally & Aaron  
 Goodwillie  
 Edith Greene  
 Charles & Kathleen Grier  
 Maura Grogan & Steve Cornell  
 Beth & Frank Guldseth  
 Tom Haas  
 Ynez Haase  
 Margaret Hacskaylo  
 Karen Halderson  
 David Hall  
 Elaine Hallgarth  
 Dane Hannum  
 Maggie Hanus  
 Patty Hardy  
 Roy Harris  
 Jim Harrison  
 Jim & Lori Hartman  
 Dr. Loline Hathaway  
 Loren & Jan Haury  
 Susan Hausser  
 Stan & Jeanie Haye  
 Christopher Heller  
 James Henson  
 George Herlihy  
 Robert & Chandra Hershey-  
 Lear  
 Cayce Hill  
 Robert Himmerich y Valencia  
 Ron Hine  
 Barbara & Robert Hirni  
 Martin Hjortso  
 Mary Holt  
 Andrew & Sasha Honig  
 Dale Hooper  
 Joe Hoover  
 Robert Hopkins  
 Susan & Dick Imwalle  
 Jason Isenberg  
 Charles & Helene Jenkins  
 Darcy Johnson  
 Larry Jones & Barbara  
 Worthing-Jones  
 Babette Josephs  
 David & Barbara Kelly  
 William Kemling  
 Karen Kennedy  
 Jenny & Gary Kennedy  
 Lucy & Colin Khoury  
 Christa King  
 Barbara Kingsolver & Steven  
 Hopp  
 Dennis Kizerian  
 David & Mary Klein  
 Vernon & Diane Kliewer  
 Sheldon Knapp  
 Charles Kober  
 Karen Koevary  
 Edwin Kohlhepp  
 Bill & Beth Krumbain  
 Delight & Timothy Lane  
 D. Terrence Langendoen &  
 Nancy Kelly  
 Victoria Lanphier  
 Gilbert Leivas  
 Arline Lemeshevsky

Al & Mary Leonard  
 Phoebe & Jack Lewis  
 Max & Claire Licher  
 Denise Lindow  
 K. Tsianina Lomawaima  
 Dennis Lubbs  
 Nancy Lutz  
 Dr. Amy Lyman  
 Bob Maddox & Katie  
 Hirschboeck  
 Harlen & Cheryl Mallis  
 Kathy & Gordon Markham  
 Helene Martin  
 Martha Martin  
 Rudy & Maria Mathews  
 Patricia Mathios  
 Linda Mayro & William H.  
 Doelle  
 Scott McCleve  
 Delle McCormick & Marise  
 Werner  
 Letitia McCune & Dave Magner  
 Mary McGonagill & Gary  
 Bryant  
 Anastasia McInnis  
 Charles McKittrick  
 John & Barbara McLean  
 Donna McNamara  
 Michael & Linda McNulty  
 Karen Moriah  
 Laura Merrick & Matt Liebman  
 Joan Metzger  
 Christine Michalowski  
 Carl & Debra Ann Miletto  
 Mary Miller  
 Mr. & Mrs. Pete Miller  
 Sheila and Rowe Miller  
 Matthew Miner  
 Elizabeth Mize  
 Diane Monnier  
 Philip Mooberry, DDS  
 Marianne Mooney & Joseph  
 Sasfy  
 Sharon Moore & Larry Pierce  
 Miriam Moore  
 David Mount & Jennifer Hall  
 Lynn & Mike Murphy  
 Lou & Robert Murphy  
 Suraiya Murray  
 Diego & Elena Navarrette, Jr.  
 Jennifer Nelson  
 Jay Newburgh  
 Sue & Maurice Nieland  
 Wendell & Rosemary Niemann  
 Jasper & Beth Norris  
 Fred & Ann Norton  
 Bob Nuss  
 Joyce & Roger Nussbaum  
 Ann O'Connell  
 Katharine Olmstead  
 Diane & Michael O'Meagher  
 P.S. Osborne  
 Michael Palmer & Suzanne  
 McAlister  
 Louise & William Pape  
 Allen Parleir & Ella Woods  
 John Parodi  
 Josephine Parrish  
 Sam & Mary Perry  
 James Person

Jo Ann & Richard Peter  
 Mari Petti  
 Shirley Pfeifer  
 John Pfersdorf & Pam Boyer  
 Shelly Phipps  
 Steve Pilon Theresa Dunn  
 Margaret Pope & Norman  
 Epstein  
 Kenneth Porter  
 Vincent & Nancy Price  
 Herb Puffer  
 Harriet Purtell  
 Donald Pusateri  
 Carol & Thomas Quijada  
 Bea & German Quiroga  
 David Randall  
 Kathleen Randolph  
 Pat & Mimi Reid  
 Janice Rickert-Mueller & John  
 Mueller  
 Theresa & Michael Rigney  
 Bob & Lisa Rimsza  
 Michelle Rivera  
 Edward Robb  
 Glenn Roberts  
 Lucia Robinson  
 Karin Rodes  
 Robert Roemer & Li Terry  
 Paul & Mary Ross  
 H. Stewart Ross  
 Sarah Ross  
 Jonathan Ruel  
 David & Tine Russell  
 San Xavier Cooperative  
 Association  
 Lindianne Sarno  
 David Sarrazin  
 Drs. John & Helen Schaefer  
 Stephen Schmidt  
 Ginny Schnell  
 Eugene Schupp & Janis  
 Boettinger  
 Suzanne Seay  
 John Seeger  
 Karen Seger & Robert White  
 Kim Seifert  
 Karen Shafer  
 Lois & Richard Shelton  
 Allison & Everett Shock  
 Mr. & Mrs. Bernard Shoor Fund  
 Ellen Sidor  
 Sheila Slaughter  
 William & Carol Smallwood  
 Jessica Smith  
 Linda & Dennis Smith  
 Norman Smith  
 Cynthia Soller

Jon Solomon  
 Andrea Sonnabend  
 Claude Souquet  
 Sara Spicer  
 Julia Spray  
 Mary & Vance Stanford  
 K. Martin Stevenson  
 Timothy Storer  
 Cary & Nicolette Stubbs  
 Wendy Svitol  
 Janet Swanson  
 Jeanne Swarthout  
 Tom & Suzanne Swetnam  
 Mike Tarre  
 Patricia Thomas & Scott C.  
 Atthowe  
 Mike Toepper  
 Timothy Toth  
 Cheryl Toth  
 Margaret Trachta  
 May Trees  
 Linda Trujillo  
 Jan Trumbo  
 Thomas & Jacquelyn Tucker  
 Drewe Tulchin  
 Ted & Helen Turner  
 Justin & Linda Turner  
 Raymond & Jeanne Turner  
 Amy Unthank  
 Nancy Van Dyke  
 Verna Van Loan  
 Barbara Varner

Dana Vincil  
 Gwinn & Pat Vivian  
 Ann Vivitt  
 Leigh Vorhies  
 J. Waines  
 Warren Walker  
 Bettine & Lawrence Wallin  
 Priscilla Walsen  
 David & Kay Walters  
 Henry Ware  
 Brent Warner & Cristina Doria-  
 Warner  
 Patricia Waterfall  
 Wilhelmina & Harold Watkins  
 Herb & Diane Welhener  
 Ronald & Karen Wells  
 Renee & Steve West  
 James & Mary Westberg  
 Nancy White  
 Kathleen Williams  
 Lawrence Wilson  
 James & Bonnie Winn  
 Devera & Michael Witkin  
 Nina Woessner  
 John Wood & Shirley Powell  
 Contance & Jeffrey Woodman  
 Bill Worthey  
 Mary Wright  
 Michael Yeatts & Nina Swidler  
 Penelope Yeoman  
 David Yetman  
 Russ & April Young

*Any donor whose name appeared in this issue and wished to remain anonymous or whose name did not appear on the list and should have, please let us know. Thanks!*

## Many thanks to those who donated goods or services...

Arizona Sonora Desert Museum	Brenna Lacey
Betts Printing	Greg Mason
BIO5 Institute/The University of Arizona	Linda & Michael McNulty, Lewis & Roca
Jenny Carrillo	Betsy McGee
Gay Chanler	Alice McKittrick
Mary Ann Clark	Kate McMillan, LTD
Nancy Evans	F. Peter Rose
Tom & Cande Grogan	Santa Cruz Valley Heritage Alliance
Edward Hacskaylo	Julie St. John
Todd Horst	Stephen Thoommes
Jeff Hursh, Snell & Wilmer	Tohono Chul Park
Bryn Jones & Ken Hedrick	Trader Joes
Laurie Kostelecky	Janos Wilder
Susan Kunz & t. kay Estes	Ward VI City Council Office

## Leave Your Legacy: Remember NS/S in Your Will

Please consider supporting Native Seed/SEARCH by including us in your estate planning. A planned gift will continue your legacy and further NS/S's efforts to conserve the agricultural heritage of this region. If you would like to learn more about how to designate NS/S in your will, please contact Julie Evans at [jevans@native-seeds.org](mailto:jevans@native-seeds.org) or 520.622.0830.

## From our friends...

NS/S friends are widespread around the globe. Our website has tracked log-ins from visitors in countries as far away as the Czech Republic, Vietnam, Liberia, Mexico, Greece, Singapore, Dominican Republic, India, Argentina, Ireland, and Taiwan.

Thank you for sharing the following with us:

In October, Food Conspiracy Co-op held our most successful membership drive in recent history. As an incentive for new members to join, we pledged to donate \$5 to a local non-profit for every new member we signed up. Twenty-three new members selected Native Seeds/SEARCH as their favorite non-profit on our list. This check is evidence of the important work you are doing in this community.

*Tori Ligon, Outreach Coordinator,  
Food Conspiracy Co-op, Tucson AZ*

Thank you very much for your generous donation of seeds to the City High Garden. Because of you, the students are planting fall and winter crops! Thanks for all you do.

*Angela Bennett-Castle, AmeriCorps Volunteer  
City High School, Tucson AZ*

Last week I served my annual 'Indigenous foods' feast to my botany lab classes after we watched the classic NOVA program, *Seeds of Tomorrow*, featuring a very young Gary Nabhan seeking out tepary beans in really dry terrain. We enjoyed your blue-speckled teparies, cornbread made with your blue cornmeal, and chili chocolate brownies. One of the satisfied eaters asked: "How did you make these beans? I don't think I've ever eaten beans by themselves before, only in chili." This from a college senior, so I figured the investment of time and effort was worthwhile! This lab is always a high point of the semester. With gratitude for the work you all do,

*Linda R. Finke, Ph.D., Associate Professor of Biology  
Xavier University, Cincinnati OH*

Thank you to everybody at Native Seeds/SEARCH from Sierra Dove for your contribution of seeds for our summer program at the Mescalero Apache Reservation. We appreciate your support.

*Julia Price, Executive Director, Sierra Dove  
Mescalero Apache Reservation, Alto NM*

## SHARE YOUR EXPERIENCE!

Have you had fun and success growing NS/S seeds? We love hearing your stories and would like to highlight them in our newsletter. Please email your experience and photos to [membership@nativeseeds.org](mailto:membership@nativeseeds.org)



**Mescalero Apache children with corn harvested from their summer program.**

## Volunteer Highlight

### Fania Bevill: Unlocking Mysteries

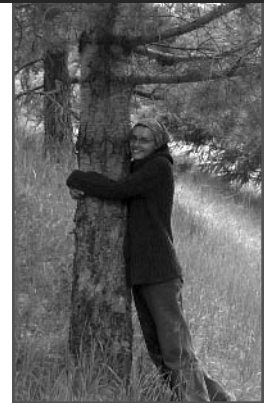
by Jules Richelson,  
Volunteer Coordinator

In a few short months, Fania Bevill already has managed to integrate herself into many different roles at Native Seeds/SEARCH. A volunteer since September 2009, Fania dedicates every other Monday to the Seed Bank—processing chilies, conducting germination tests, and providing general assistance. On other days, she's also joined Chris Lowen at the Conservation Farm to put in some hard labor. However, Fania's commitment to NS/S doesn't stop there. Fania was invaluable at the Harvest Fest, setting up tarps, tables, and tossing beans in the air to separate the chafe. She also assisted at the Conservation Center groundbreaking in November. She steps up to any request for help, always sharing a beautiful smile.

Fania's housemate when she was in midwifery school first introduced her to NS/S. "I was amazed by the magical transformation of our dirt 'parking lot' front yard to a wild, lush garden" with seeds ordered from Native Seeds/SEARCH. Fania became a gardener and is learning the ropes of cultivating a Southwestern garden. This past summer she planted popcorn, beans, squash, and wild flowers. Her winter crops include amaranth, arugula, bok choy, garlic, onions, leeks, and flax. In the spring, she'll try tomatoes and cotton. Food autonomy is a significant part of Fania's value system and she believes that it's an essential part of cultural and political sovereignty for many groups of people.

Having survived her first summer in the desert, Fania fell in love with Tucson and calls it a "quirky, laid-back town." She cites the talented artists, musicians, street festivals, and friendly, open-minded residents as her favorite things about the Old Pueblo. Aside from her volunteer work, Fania loves anything to do with food: growing it, cooking it, eating it, or reading about it. She is an outdoors type and often hikes with her field biologist brother to wonderful locations, abundant with wildlife and bikes to work in the accommodating Tucson weather.

Volunteering with NS/S encourages Fania to learn about plants and unlock the mysteries of the seeds that produce them. Thank you, Fania, for sharing your time with NS/S.





## NS/S Staff Highlights

### Meet 3rd Quarter's 2009 Seed SEARCHers of the Month!

Each month, NS/S employees select one of their peers as the Seed SEARCHer of the Month. This award is presented in recognition of their achievements and accomplishments for the organization. Meet our Seed SEARCHers for the third quarter of 2009.

NS/S staff voted Director of Finance and Operations **Tracey Martineau** as our September 2009 Seed SEARCHer. Tracey moved to Tucson from her native Rhode Island this past summer and quickly became enamored with the combination of mountains and desert landscape. She has been involved in finance and bookkeeping for more than twenty years, much of the time working exclusively with non-profit organizations. The Loft Cinema and Native Seeds/SEARCH are two of the things Tracey loves best about Tucson.



October's Seed SEARCHer was **Kieran Conner**, Retail and Distribution Assistant who packages "thousands of pounds" of product for our store and online sales. Kieran joined NS/S in December 2008 and spends her days at our retail store breaking down "big bags of seeds into little bags." Much more complicated than that, Kieran oversees volunteers who help repackage beans, chilies, and other products for distribution and sale. Originally from Virginia, Kieran

has lived in Tucson for almost twenty years. She cites gardening, urban farming, cooking, and hiking as her favorite pastime activities.

Development Director **Julie Evans** was the November Seed SEARCHer. She holds a Master's of Social Work and has an extensive background in non-profit work. Julie began volunteering with NS/S in 2003 and became a staff member in 2004. One of her favorite responsibilities is building relations with the community, donors, and other like-minded organizations. When not on the job, Julie can be found playing ultimate frisbee, hiking, or enjoying a plate of delicious food.



NS/S named Membership & Events Coordinator **Suzanne Jameson** as December's Seed SEARCHer. A native Tucsonan, Suzanne has a BA and a MFA from the University of Arizona. Suzanne loves animals of all kinds, warm summer days, and writing fiction. This is Suzanne's second award.



## On the Road with Alex: Building Partnerships with Native American Communities

For more than twenty-five years, Native Seeds/SEARCH has worked with Indigenous farmers, gardeners, and community organizations to conserve agricultural diversity within the Southwest U.S. and northwest Mexico. During the next twenty-five years, we look forward to building upon these relationships and developing new ones with Native American communities in order to make a greater impact within the geographical region.

We are proud to announce, and extend our sincere gratitude to, the following members of our newly created advisory panel to assist staff and the Board's Native American Committee in our efforts to assess our work with Native communities. Our ultimate goal is to develop a Code of Ethics that describes how we approach working with Indigenous communities, as well as policies on intellectual property rights (IPR) and benefits sharing. The Advisory Panel includes:

- ☛ **Paul Buseck** — *Coordinator of Tohono O'odham Community College Sustainable Agriculture Program*
- ☛ **Joe Graham** — *Director of the Indian Resource Development Program at New Mexico State University, from Pueblo of Laguna*
- ☛ **Robert Hershey** — *Director of Clinical Education for the University of Arizona Indigenous Peoples Law and Policy Program*
- ☛ **Vincent Knight** — *Attorney*
- ☛ **Ed Mendoza** — *Traditional Native American Farmer and educator*
- ☛ **Felipe Molina** — *Former NS/S Education staff member, Yoeme cultural consultant, and TUSD educator*
- ☛ **Rebecca Tsosie** — *Executive Director for the Indian Legal Program in the Sandra Day O'Connor College of Law at Arizona State University*

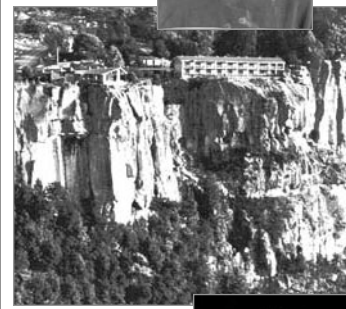
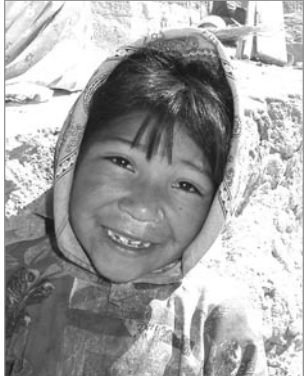
In addition, we seek to learn from stakeholders who receive NS/S seeds, or have interactions with NS/S. We're in the process of creating a series of community dialogues that will help us understand these issues in a more meaningful way than what we could learn by a formal survey. **Stay tuned for more.**

*Alex Sando, NS/S Native American Program Coordinator, travels primarily in Arizona and New Mexico and occasionally to Mexico visiting farmers with small family gardens, community gardens, and larger scale farms. On the Road with Alex is a regular feature in Seedhead News.*

# Tour the famous Copper Canyon with NS/S founders: Cultural anthropologist Dr. Barney T. Burns and Mahina Drees



**April 17–25, 2010**  
**Reserving now...**  
**Don't miss it!**



## **Copper Canyon: Land of the Tarahumara**

Copper Canyon in Mexico's northern Sierra Madre is known for its vast breathtaking beauty, rugged canyons, impressive railroad and for the people who call it home, the Tarahumara. You may have *been* to Copper Canyon before, but you don't *know* the place and its people until you've traveled there with Dr. Barney T. Burns, who, with Mahina Drees, has worked and traded with the Tarahumara for more than three decades.

This unique learning vacation begins in Tucson as we board our rolling classroom, a luxury U.S. motorcoach, to travel the scenic route between Tucson and El Fuerte, Sinaloa. En route, we'll overnight on the Sea of Cortez at San Carlos, Sonora. That world-class train ride will take us up into the Sierra Madre, where we'll overnight *right at* canyon's edge! Then enjoy three nights at Creel, where we'll venture out to Tarahumara villages and discuss NS/S projects. Our coach will meet us again at Creel and return us to Tucson along the east side of the Sierra Madre, via Casas Grandes. Barney will discuss the Tarahumara culture in detail, plus the Yaqui, Mayo, Mennonite and Mormon people as we pass through Sonora, Sinaloa, and Chihuahua. You will be *amazed* by Barney's knowledge of Apache history in Mexico! What sets this program apart is the quality of your learning experience, Barney and Mahina's personal connection with this land and its people, and the professionalism and affability of our leaders and interpreters. *Don't miss this once-in-a-lifetime opportunity!*

### **Features:**

- Eight nights of comfortable hotel accommodations
- Roundtrip from Tucson in luxury U.S. motor coach rolling classroom
- Train and local transportation in Copper Canyon
- Many enjoyable meals included
- Tarahumara, Yaqui and Mayo cultural anthropology
- Apache, Mormon, and Mennonite history in Chihuahua
- Archaeological tour of Paquime ruins and museum
- Outstanding* shopping for quality folk arts and crafts
- Support for Native Seeds/SEARCH

*The cost of \$3395 per person, double occupancy, includes your \$500 donation to NS/S.*

### **Reserve Now!**

Send your \$300 per person deposit, with name, address and phone of each participant to: Baja's Frontier Tours, 6060 E. Calle Ojos Verde, Tucson AZ 85750

### **Questions and/or Brochure:**

Call Mary & Piet Van de Mark in Tucson: 520.887.2340.  
Outside Arizona, call 800.726.7231 or email [piet@bajasfrontiertours.com](mailto:piet@bajasfrontiertours.com)  
For more information, visit [www.bajasfrontiertours.com](http://www.bajasfrontiertours.com)

## To Contact NS/S Staff

### Conservation 520.881.4804

*Director of Conservation* Suzanne Nelson

*Curator of Collections* Chris Schmidt

*Collections Manager* Lindsay Werth

*Seed Distribution Coordinator*

Dawna Gravely

*Farm Operations Technician*

Benito Gutierrez

*Field Coordinator* Chris Lowen

*Conservation Assistant* Ashlie West

*Native American Program Coordinator*

Alex Sando

### Distribution 520.622.5561

*Director of Distribution* J.P. Wilhite

*Distribution Coordinator* Betsy Armstrong

*Retail Assistants* Vivian MacKinnon, Kieran

Connor, Jerry Morgan

### Administration 520.622.0830

*Executive Director* Bryn Jones

*Director of Finance & Operations*

Tracey Martineau

*Director of Development* Julie Evans

*Membership & Events Coordinator*

Suzanne Jameson

*Volunteer Coordinator* Jules Richelson

*Administrative Assistant*

Maureen Moynihan

*Accounting Intern* Kadeon Thomas

## Donate Online

Now it's even easier to support Native Seeds/SEARCH on our secure website!

Visit [www.nativeseeds.org](http://www.nativeseeds.org), click on *Support* and select how you'd like to make a donation. We count on your ongoing support to ensure the precious agrobiodiversity of the Southwestern U.S. and northwest Mexico given to us by past generations remains available to current and future generations. Email [donate@nativeseeds.org](mailto:donate@nativeseeds.org) if you need assistance. *Thank you!*

# News & Notes

## Welcome!

We are pleased to welcome **Dawna Gravely** as our new Seed Distribution Coordinator. Dawna will work at the Sylvester House and with store staff to process orders for seed, assist with germination testing, and coordinate with volunteers.

NS/S is pleased to introduce our two new board members, **Sage Goodwin** and **Don Luria**, both of whom bring essential skills and backgrounds to our organization.

**Sage Goodwin** combines his experience and education in cultural anthropology, permaculture, and ethnomusicology and explains his desire to work with NS/S in this way: "Seeds are treasures that came about through an intimacy with the natural world and local context. They are gifts of nature and people. The seeds are a distillation of a relationship to nature and place and history and their stories are enfolded in them. Their stories are rich, their stories bring sanity to our world, nourishment to our bodies, homes, and communities." Sage has traveled extensively throughout Western Europe, Mexico, India, Nepal, Costa Rica, and Mongolia.

**Don Luria** may be new to the NS/S board, but certainly not to Tucson. Don is the former owner of Café Terra Cotta, and the founder of the Tucson Culinary Festival. He serves as Vice President of Slow Food Arizona and as a board member of the Local First Arizona Foundation. Don's humanitarian awards and honors are many and include UApresents Philanthropist of the Year Award in 1999, one of the 2001 Father's of the Year, and Arizona Theatre Company's Georgie Award in 2002 which he shared with his wife Donna Nordin. In 2004, the Scottsdale Center for the Arts presented Don with their first lifetime achievement award.

## Wishlist *Please call 520.622.0830 for details*

**Paper cutter** with 24" blade

**Three computers less than two years old** (2.5 GHz CPU, minimum of 1 GB RAM, 80 GB hard drive, Ethernet port) with either Windows XP or Windows version 7 operating system

**Three 17" LCD monitors**

**Wireless broadband (Wi-Fi) router**

**2005 or newer 4-wheel drive, high-clearance SUV** (Nissan Xterra or Pathfinder, Isuzu Trooper or Rodeo, Toyota 4-Runner or Land Cruiser) with low mileage and in good condition

## We Were Recognized!

The *Tucson Weekly* ran a story on October 29, 2009, as a feature in their YUM food issue entitled "Native Flavor: Local Heritage Foods are Making a Well-Deserved — and Delicious — Comeback." You can read it online at [www.tucsonweekly.com/tucson/native-flavor/Content?oid=1497579](http://www.tucsonweekly.com/tucson/native-flavor/Content?oid=1497579)

## Find us on Facebook!

Become a fan and learn about upcoming events and view photos from recent events.

## Going Greener

If you want to receive this newsletter electronically, please send your email address with *Newsletter Request* in the subject line to [membership@nativeseeds.org](mailto:membership@nativeseeds.org) and go green!



Native Seeds/SEARCH  
 220 E. Sixth Street  
 Tucson, Arizona 85705

Non Profit Org  
 US Postage  
 PAID  
 Tucson, AZ  
 Permit #2157

**We're Moving!**  
**In-Store Coupon**

**Members** receive **15% discount**

**Non-members** receive **10% discount**

**Only valid after**  
**March 1, 2010\*** at  
 3061 N. Campbell Avenue  
 Tucson AZ 85719

\*Visit [www.nativeseeds.org](http://www.nativeseeds.org)  
 for Opening Date details!  
 NO OTHER DISCOUNTS APPLY



After twelve years on Fourth Ave, we're moving our store to 3601 N. Campbell Ave, just south of Ft. Lowell. We hope you'll enjoy the ample parking, high visibility, and wonderful opportunities the new location offers.

We can't wait to move (sometime in January) and look forward to showing you our new home. Watch for news on our website [www.nativeseeds.org](http://www.nativeseeds.org), our Facebook page, or by snail mail. Come visit us!

And don't worry, the location may change, but the hours and all your favorite NS/S products will remain the same:

**Monday–Wednesday, 10am–5pm**  
**Thursday–Saturday, 10am–6pm**  
**and Sunday, 12–4pm**

Plus, we're still available at 520.622.5561, [info@nativeseeds.org](mailto:info@nativeseeds.org) or [www.nativeseeds.org](http://www.nativeseeds.org)

Shop at our store or online for seeds, indigenous arts & crafts, books on southwest gardening, cookbooks, chiles, and more!

**We're Moving!**

**Coming Up in 2010**

**January 23**  
 Cooking with *Chiltepins* Class

**January 29**  
 Volunteer Appreciation  
 Breakfast

**March 7**  
 Flavors of the Desert  
**Spring** (dates TBD)  
 Spring Plant Sale **and**  
 Vermiculture Workshop **and**  
 Phoenix Meet & Greet **and**  
 Picnic in the Park

**June** (dates TBD)  
 New Conservation Center  
 Ribbon-Cutting Celebration  
**and** San Juan's Day  
 Celebration

**October** (dates TBD)  
 Harvest Fest **and** 14<sup>th</sup> Harvest  
 Dinner at Janos Restaurant